

GWAVA Inc.

# GWAVA Retain

---

PST Import tool 

Version 3.1

“GWAVA” is a registered trade mark of GWAVA Inc, 100 Alexis Nihon, Suite 500, Saint Laurent, Quebec H4M 2P1



Retain” is a trade mark of GWAVA Inc, 100 Alexis Nihon, Suite 500, Saint Laurent, Quebec H4M 2P1

Exchange and Windows are trademarks of Microsoft Inc.

## PST Importer

The PST Importer is tool which inputs mail in PST Archives into the Retain system. The PST importer is a utility which is installed on a Windows machine, local to the PST archive and works in coordination with the Retain server.

## System Requirements

Java Runtime Environment 6 (No other Java can be present on the system.)

Windows 7, Windows 2008 R2

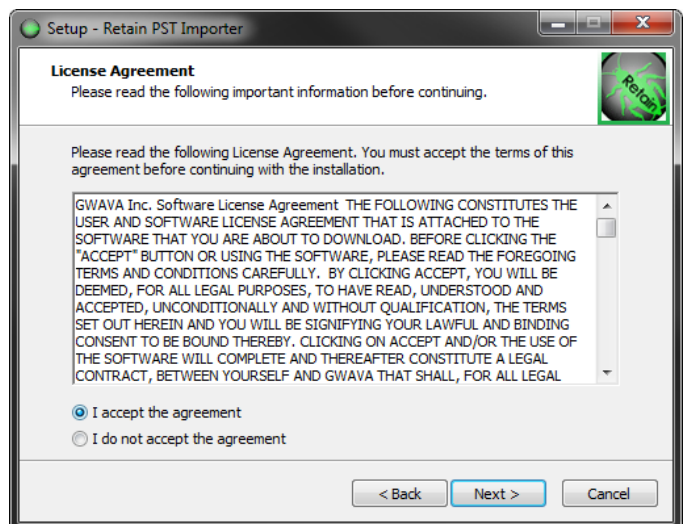
Open and direct network connection to the Retain Server

*NOTE: If the correct Java is not present in the system, the installer will not start, but will provide a link to the download of the 1.6 JDK. Select the correct version, (32 or 64-bit), download and install it. Due to the way Windows interacts with Java, there can be no other version of Java on the host machine. Uninstall any other version.*


## Installation

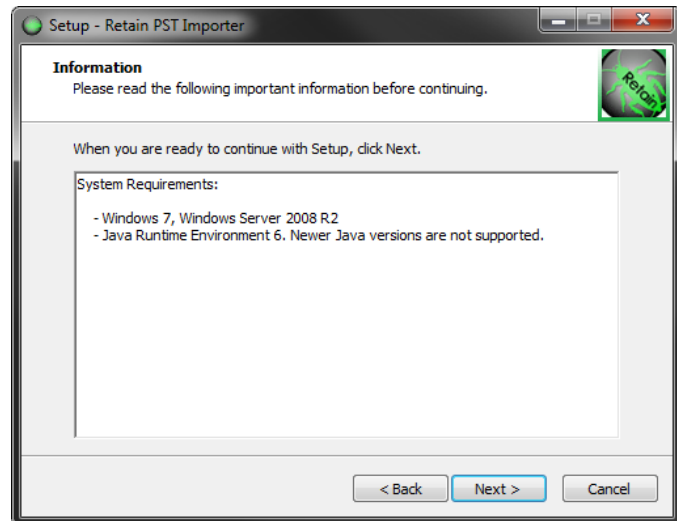
Installation of the PST Importer is simple. From the tools\pstimporter directory, locate the 'Retain-PST-Importer.exe' file and run it.

Once initialized, the PST installer will display this page. Select 'Next' to continue.

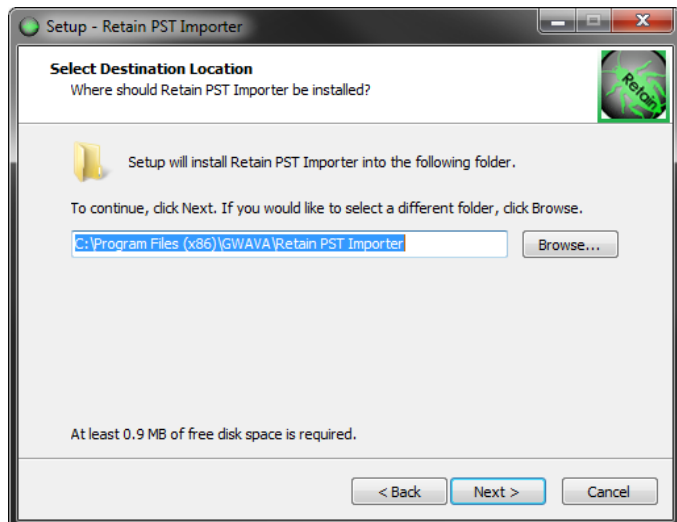



Accept the License agreement and select 'Next' to continue.

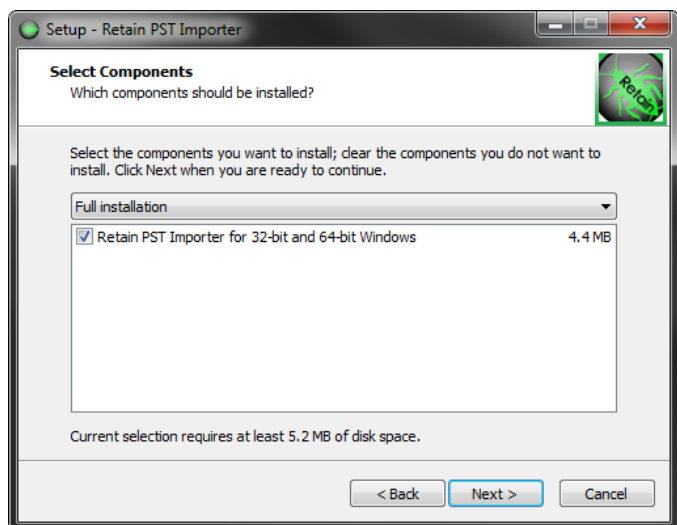
The  system requirements are listed. Select 'Next' to continue.



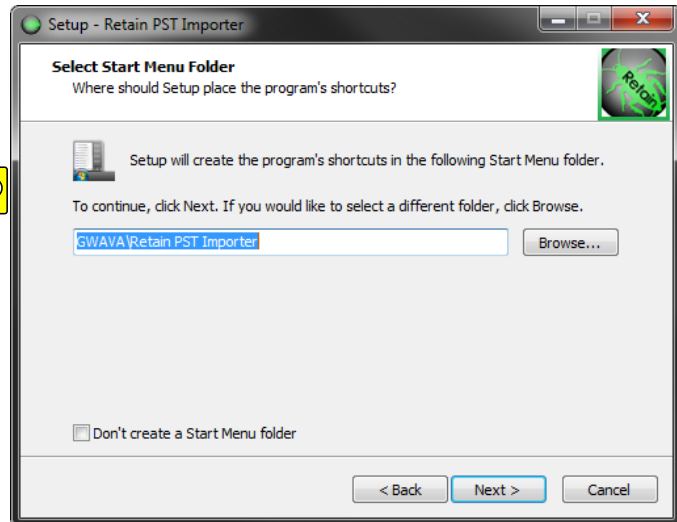
The installation folder is displayed. Change it as desired and select 'Next' to continue.



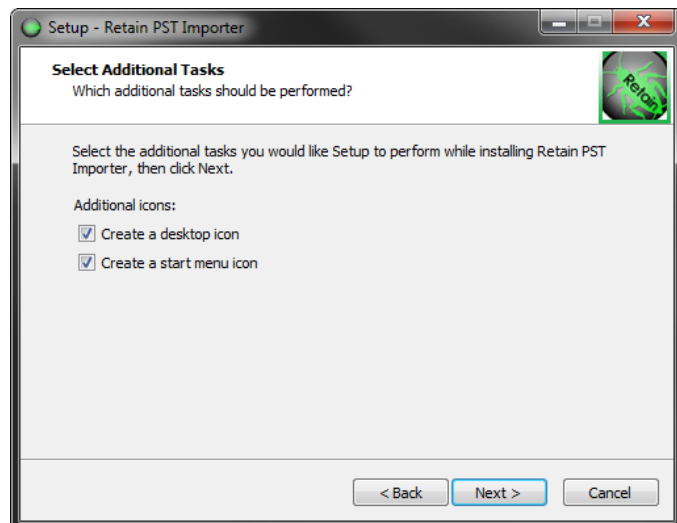
Installation scope is displayed.  Currently, all installations are the same. Select 'Next' to continue.



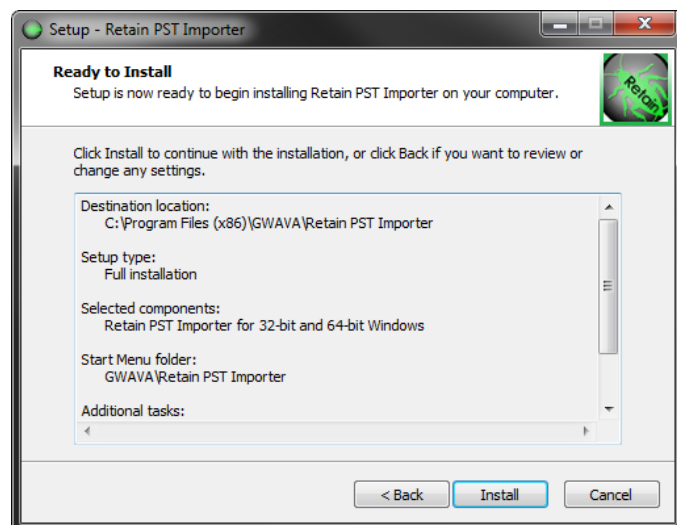
The PST Importer may be installed with a link in any desired start menu folder. The default displayed. Change as desired and select 'Next' to continue.




Select which icons and links are going to be installed in the system and select 'Next' to continue.



Review the installation settings. If any settings need to be changed or revised, use the 'Back' button to return to that interface and change them.














When correct, select 'Install' to install the program.

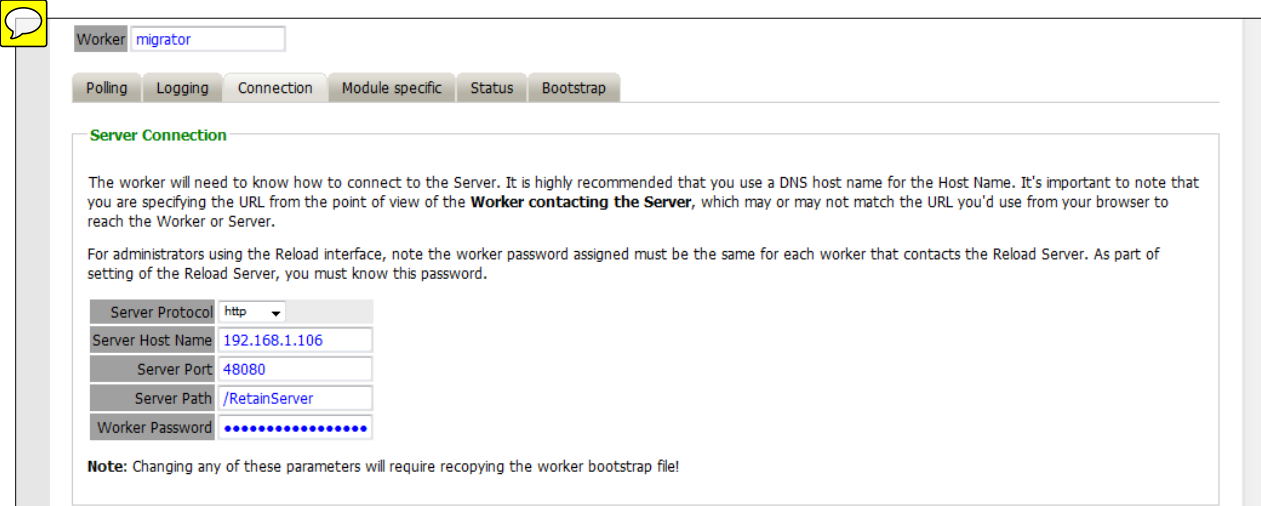
Once the installation  completed successfully, select the 'Finish' button.



## Configuration and Use

The **PSTMigrator**  requires a Worker configuration and bootstrap file to know **where**  and how to communicate with the Retain Server. **A new worker must be created, configured, and the configuration file loaded into the PST Importer.**  Follow the steps below.

1. In the Retain Server **management console**,  create a new **worker**,  it would be appropriate to name it **'migrator'**  or **'pst migrator'**  ease of remembrance, but any name desired will do,   
 **but remember that this worker** should never be configured with any jobs in the Retain Server. A general configuration is all that is required; no specific settings need to be changed from default, except the connection information if it needs to be modified in accordance to the needs of the local network. It is imperative that the **PSTMigrator**  has an open connection to the Retain server. When the settings are correct, save the new **worker**. 



Worker:

Polling | Logging | Connection | Module specific | Status | Bootstrap

### Server Connection

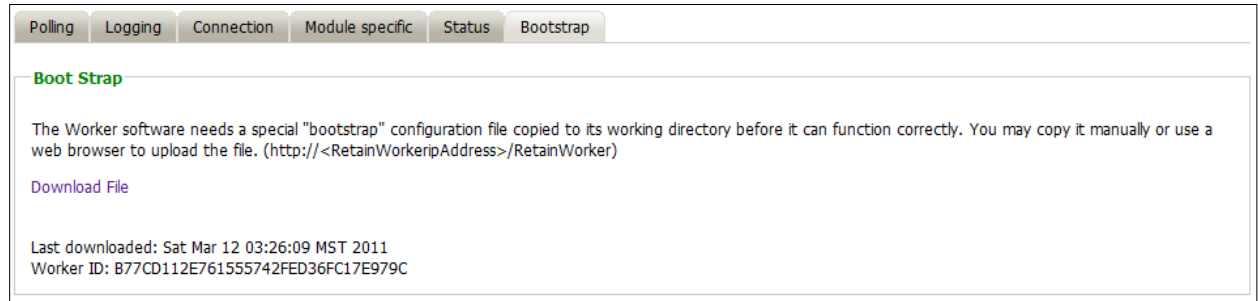
The worker will need to know how to connect to the Server. It is highly recommended that you use a DNS host name for the Host Name. It's important to note that you are specifying the URL from the point of view of the **Worker contacting the Server**, which may or may not match the URL you'd use from your browser to reach the Worker or Server.

For administrators using the Reload interface, note the worker password assigned must be the same for each worker that contacts the Reload Server. As part of setting of the Reload Server, you must know this password.

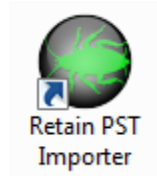
Server Protocol	http
Server Host Name	192.168.1.106
Server Port	48080
Server Path	/RetainServer
Worker Password	.....

**Note:** Changing any of these parameters will require recopying the worker bootstrap file!

2. Download the bootstrap file.

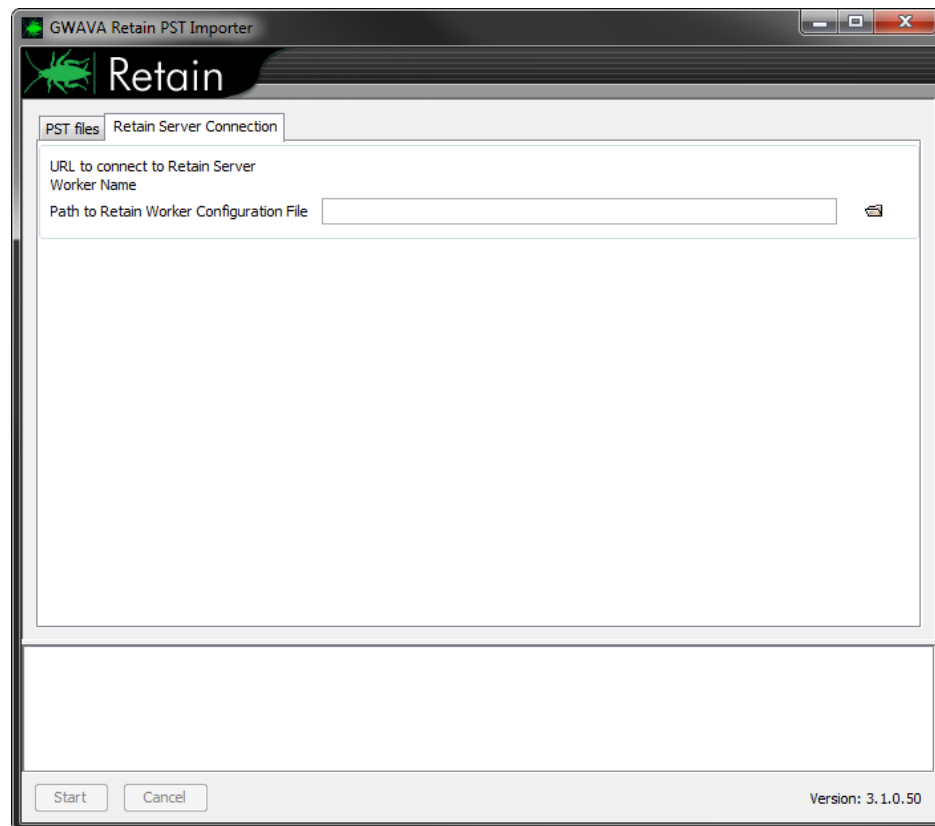


3. Run the PSTMigrator utility. Locate the Retain PST Importer icon or start menu item and run the program.



On initial startup, the Retain PST Importer opens to the configuration page.

The worker configuration file contains all the connection information for the Retain Server. (If the location changes, the worker configuration file will need to be re-downloaded.)

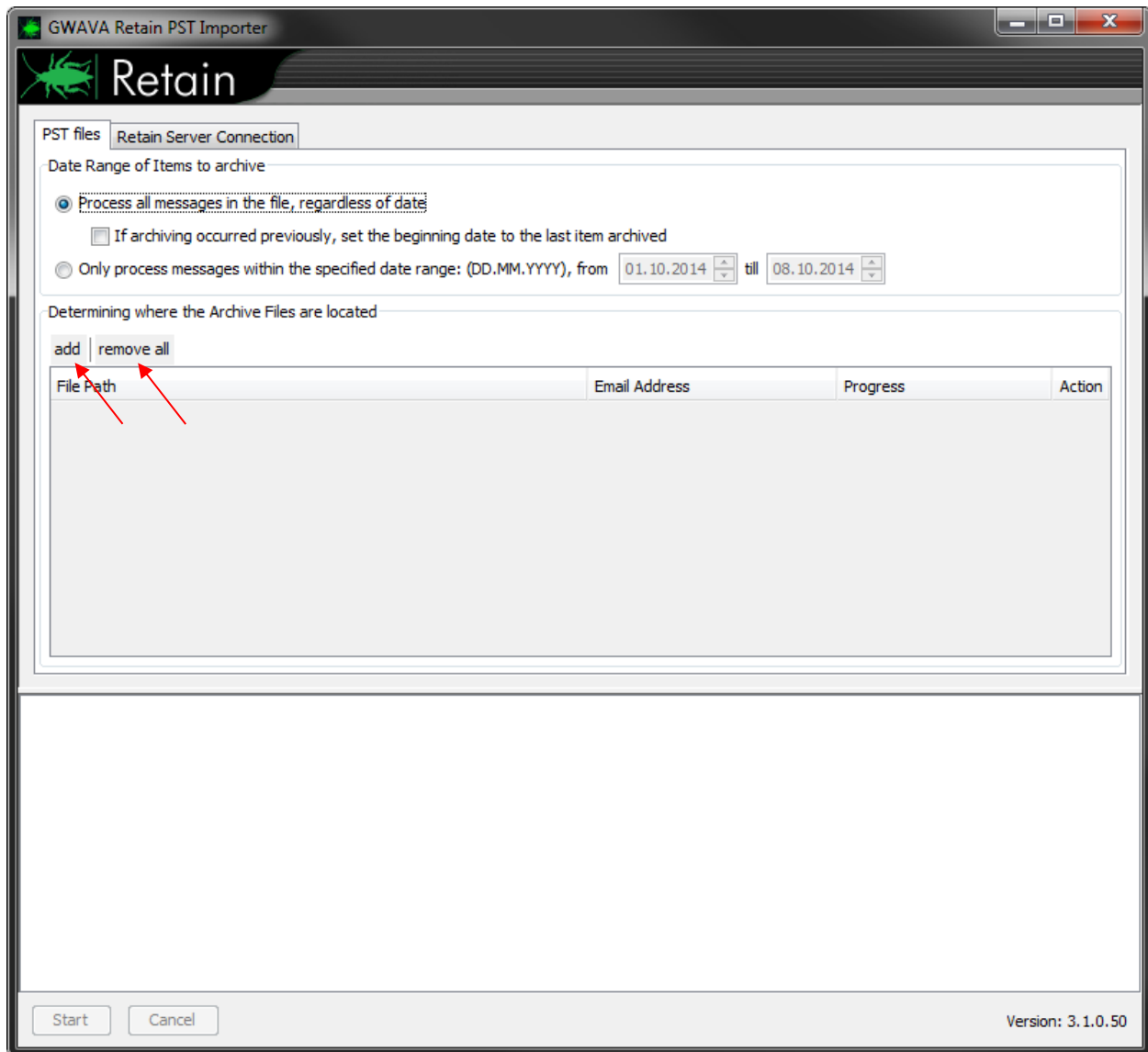


4. Upload the Worker configuration to the PSTMigrator utility. Select the Retain Server Connection tab, where the bootstrap file is specified and select the 'folder' to browse to the file location. Select the appropriate worker configuration file and load it to the Import tool.

## Use

Use of the **Import tool** is very simple. The **import tool** may be restricted to import only messages in the archive which fall into a specified date range or it will attempt to import the entire archive.

If a previously running archive job had already been performed, the tool may resume importing the archive **to** **again** where it left off.



To add or remove an archive **to** **import tool** use the 'add' and 'remove all' buttons at the top of the archive window. Adding an archive opens a browse window to allow selection of the archive. To remove **the** archives from the list, select 'remove all'.

When the desired archive or archives have been added, select the 'Start' button to **being** the archive. Rolling information is displayed in the information window at the bottom of the screen.