



GWAVA Inc.

# GWAVA<sup>®</sup> Retain<sup>™</sup>

For GroupWise<sup>®</sup>

---

## Retain Publisher and Viewer

For version 2.0

"GWAVA" is a registered trade mark of GWAVA Inc, 100 Alexis Nihon, Suite 500, Saint Laurent, Quebec H4M 2P1

"Retain" is a trade mark of GWAVA Inc, 100 Alexis Nihon, Suite 500, Saint Laurent, Quebec H4M 2P1

"GroupWise" is a registered trade mark of Novell Inc.

## Retain Publisher and Viewer

Retain 2 comes with the ability to export selected messages to a local archive for searching and viewing or to fulfill the need of a mobile archive for legal compliance. This can be extremely useful for larger systems or systems which have a high load, and where the need for review or legal compliance is being exercised, but access to the entire Retain archive is not necessary. Instead of allowing or facilitating constant access to the entire Retain Server, the Publisher can export and index groups of messages to a local archive, and the Viewer can search, view, and forward messages from the local archive.

The process is performed in two parts: the Publisher and the Viewer. The publisher, using an existing account with mail export rights, connects to the Retain Server and exports the messages complying with the search request, and creates a local database archive on the host machine. The viewer accesses the local archive and allows browsing, searching, and message exportation from the local archive.

Requirements:

- Network connection to Retain Server
- .Net 3.5 SP1
- Win32 or Win64 platform
- Retain user with rights to export mail

The Viewer can be run and installed as stand-alone client wherever a published archive exists, but it is recommended process to always install the Viewer when you install the Publisher. While the Viewer and Publisher can be installed and run separately, the Viewer must have direct access to the published archive. Do not place the published archive on a network share. Accessing the published database from a remote machine may cause instability and is insecure. For this reason, it is best to use the Viewer local to the published archive.

The install files are located in the extracted Retain install sources tools folder.

.../retain/tools/publisher

Run the installers on the desired machine.



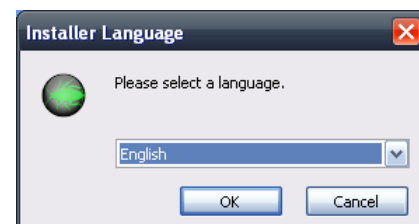
RetainPublisher.exe



RetainViewer.exe

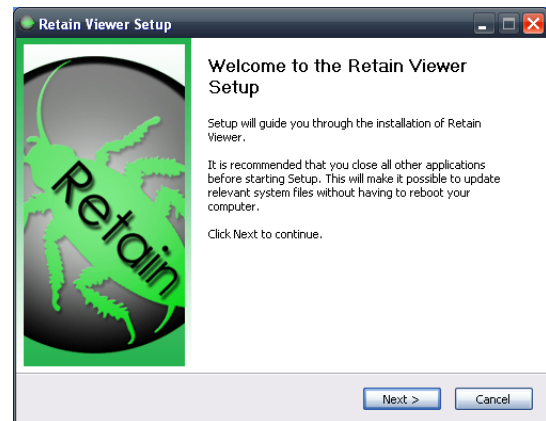
## Retain Viewer Install

First, select your installation language and begin the install wizard.



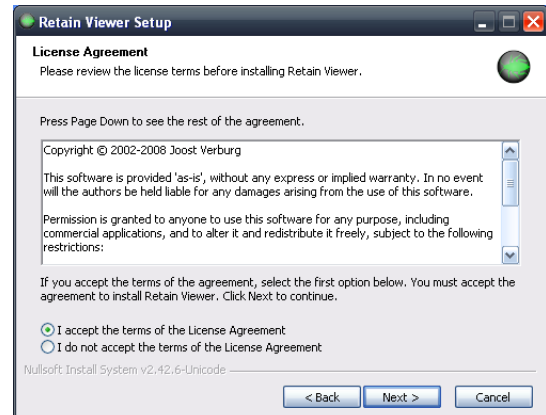
The Installation wizard goes through the general questions and checks for the required .NET 3.5 SP to be installed.

Click 'Next' to continue.

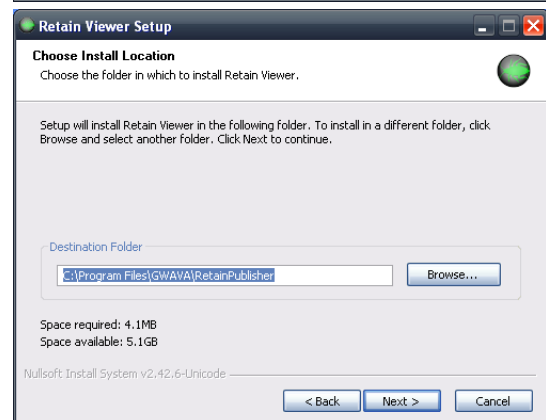


Read the license agreement and accept.

Click 'Next' to continue

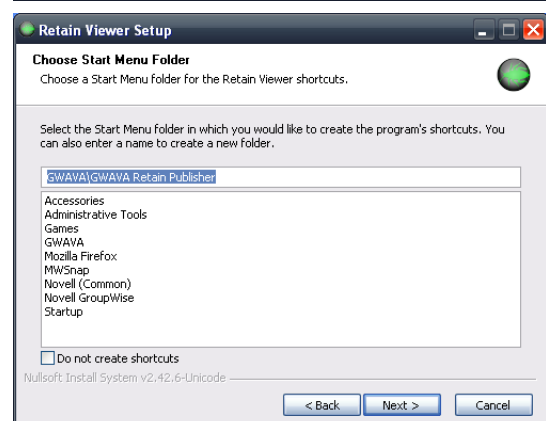


Select the install location. The default is shown, but if the default does not work for your system, browse to, or specify the new path and click 'Next' to continue.



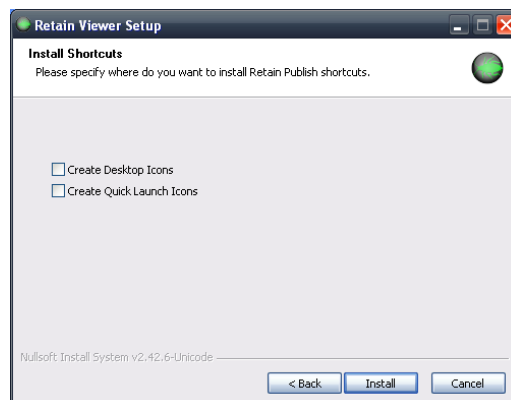
Decide where to place the start menu shortcuts, and whether you wish shortcuts to be created. If you wish to not have shortcuts created, select the 'Do not create shortcuts' option.

Click 'Next' to continue.

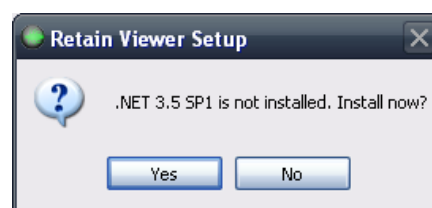


The installer then asks whether you wish to have a Desktop shortcut created, and whether to add Quick Launch icons.

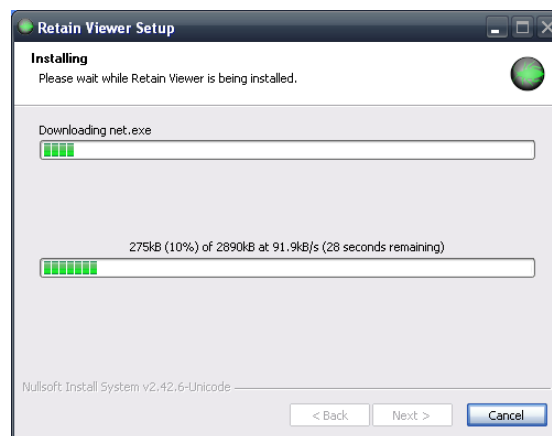
Select the desired settings and select 'Install'. If .NET is present on the system, the install will proceed and you may finish and complete the installation.



At this point, the install wizard checks for .NET 3.5 SP1. If it is not installed, the Publisher and Viewer installers will prompt you to install .NET 3.5 SP1. A internet connection is required for this installation. If you decline to install .NET 3.5, the install will fail and exit. The install requires a system restart.

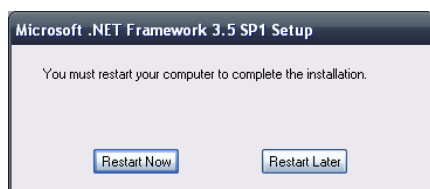


If you select to install .NET 3.5 SP 1, the correct install package will be downloaded from the internet.

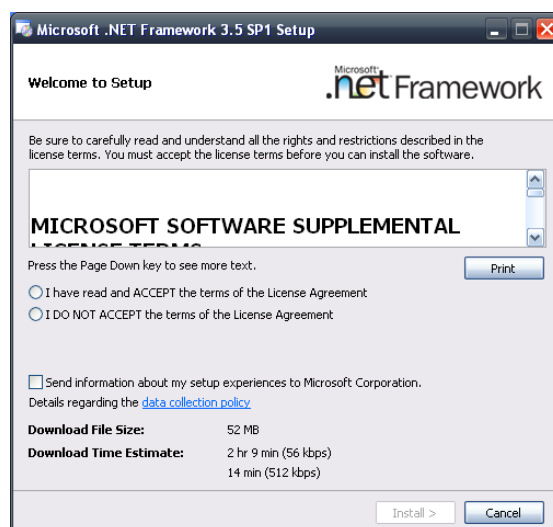


After the package is downloaded, the .NET installer will run.

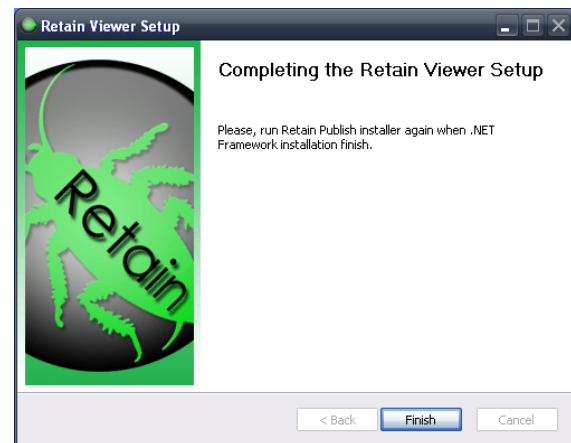
Read and accept the license agreement and follow the install to the end.



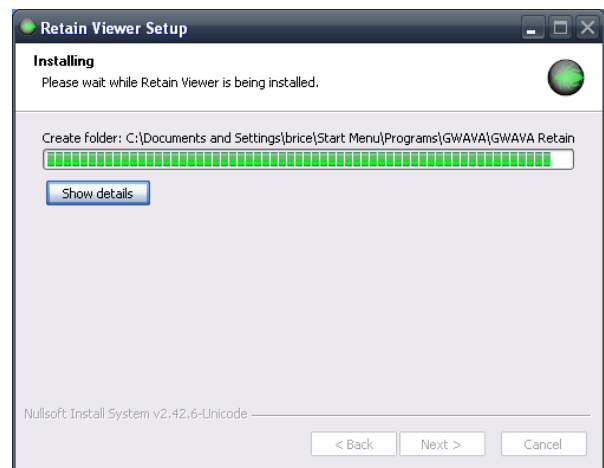
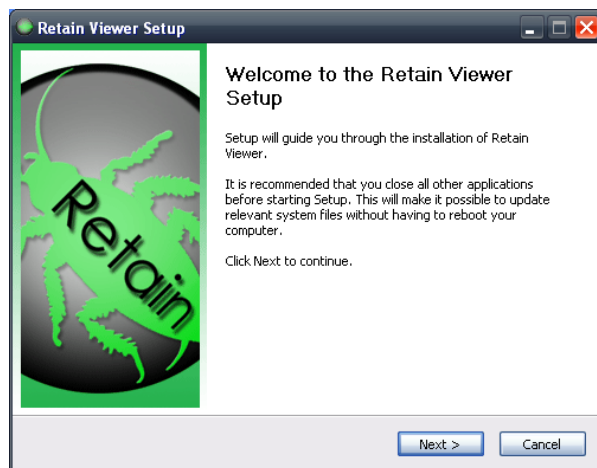
To complete the install, you must restart your system.



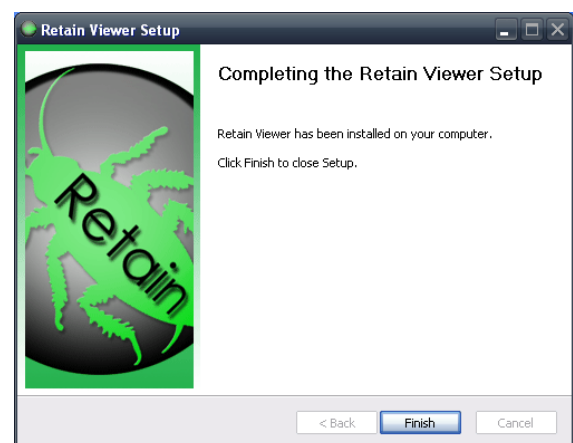
Once the system has been restarted to complete the .NET 3.5 SP1 install, the Retain Viewer or Publisher installation must be restarted.



If you have previously run the installer, but had to abort to install .NET, you will need to re-enter your settings.



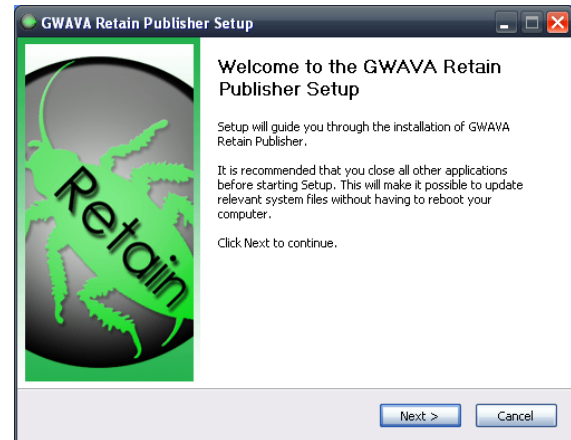
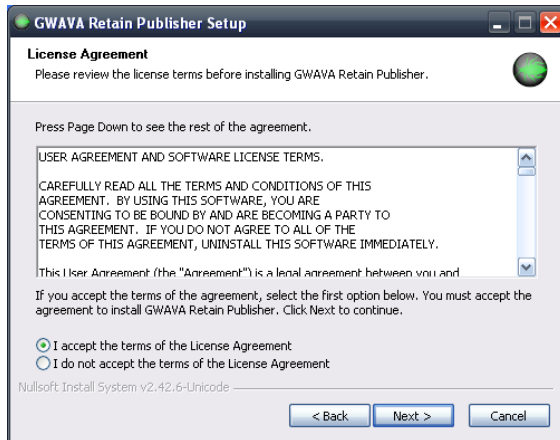
After the installation has finished, select 'Finish' to complete the setup.



## Retain Publisher Install

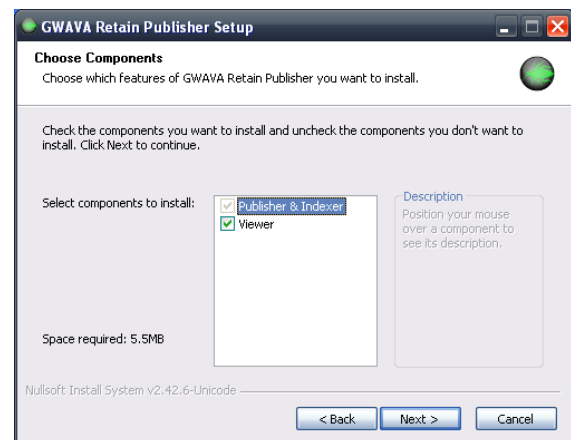
The Retain Publisher installation is very similar to the Viewer installation. Basic questions are asked, and the installer checks for .NET 3.5 SP1 before copying or installing any files.

Click 'Next' to continue.

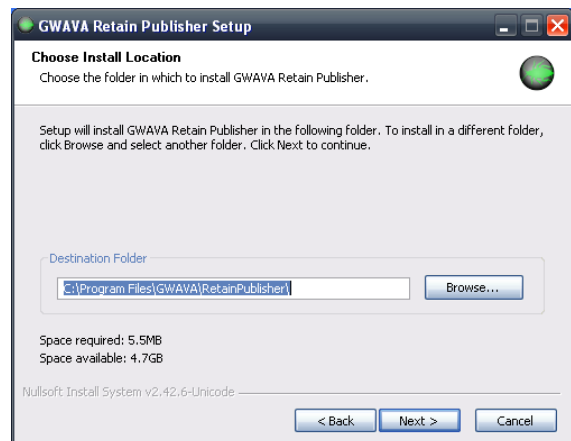


Read and accept the license agreement. Select 'Next' to continue.

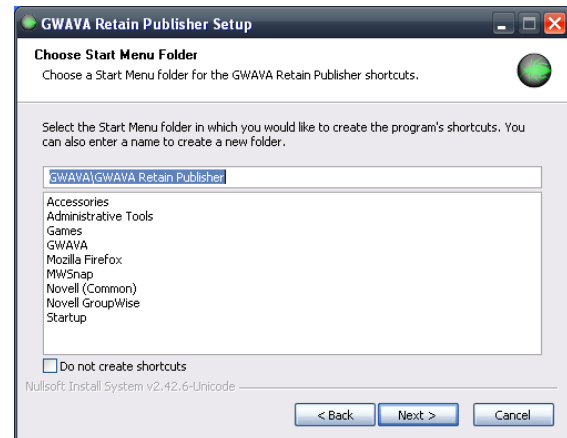
Because the Publisher is worthless without the Viewer, the Publisher installation provides the option to install the viewer alongside the publisher. If the viewer has already been installed, this is not necessary. It is recommended to have both the viewer and the publisher on the same machine. Select the desired setting and click 'Next' to continue.



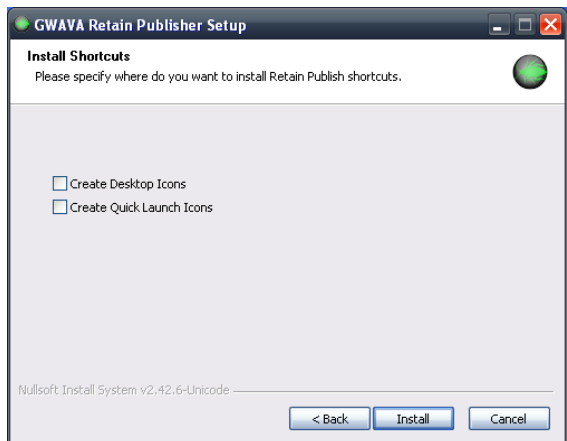
Select the install location. The default is shown. If the default location does not work for the system, browse to, or specify the desired install location.



Select where to place start menu shortcuts, or select the 'Do not create shortcuts' option to keep the installer from creating any shortcuts in the start menu.



Select the desired desktop shortcut configuration. The installer can create Desktop or Quick Launch icons if desired. Default is shown



Select 'Install' to copy the program files and install the Publisher.

After the files have been copied, select 'Finish' to complete the installation.



## Retain Publisher

The Retain Publisher must be run to create the local archive for the Viewer to connect to. The Publisher does not display messages, it just accesses and exports messages into a portable message archive.

The Publisher must be used in conjunction with a user login who has the admin publish messages right. Because the Publisher connects over the network, it requires an open network connection to the Retain Server.

The Administrator account for Retain automatically has the publish messages right, and can be used here, though it is highly recommended to create and use an auditor account with the mail export right and access to the desired mailboxes or post offices required.

Input the Retain Server DNS or IP Address and the login for the account with message export rights and rights to the desired mailboxes. Unless the login account has the administrator level right to 'search all mailboxes' then only the mailboxes granted to the auditor account will be accessible.

Granting rights to mailboxes other than the active user's own mailbox are specified in the user rights section, under the 'mailboxes' tab.

**User Rights**

Rights explicitly granted to the user.

Administrator level rights

|                                     |   |
|-------------------------------------|---|
| <input type="checkbox"/>            | Access all audit logs                     |
| <input type="checkbox"/>            | Deletion Manager                          |
| <input type="checkbox"/>            | Apply or remove litigation hold           |
| <input type="checkbox"/>            | Manage Server                             |
| <input type="checkbox"/>            | Manage Users and Groups                   |
| <input type="checkbox"/>            | Manage Workers, Schedules, Profiles, Jobs |
| <input checked="" type="checkbox"/> | Publish Messages                          |
| <input type="checkbox"/>            | Restore messages [Any Mailbox]            |
| <input type="checkbox"/>            | Search all mailboxes                      |

**Mailboxes**

These are additional mailboxes beyond the primary mailbox that the user may access. A non-admin user will only view messages addressed to these e-mail addresses (and to their primary mailbox), and might be able to forward/delete messages if given rights. An admin with *Search All Mailboxes* rights can access all mailboxes and perform any operation in the Search Interface.

**Currently Selected**

- ✗ Bastula
- ✗ maston

**Criteria**

First Name: [dropdown] begins with: [dropdown] [Search]

Show only users: ☒ Show only recently cached items: ☒

[Add Selected]

**Retain Publishing Wizard**

**Retain Server Information**

Please provide the Retain Server address and a user account with rights to publish messages.

Server Address: 192.168.1.104

Username: admin Password: xxxxxxxx

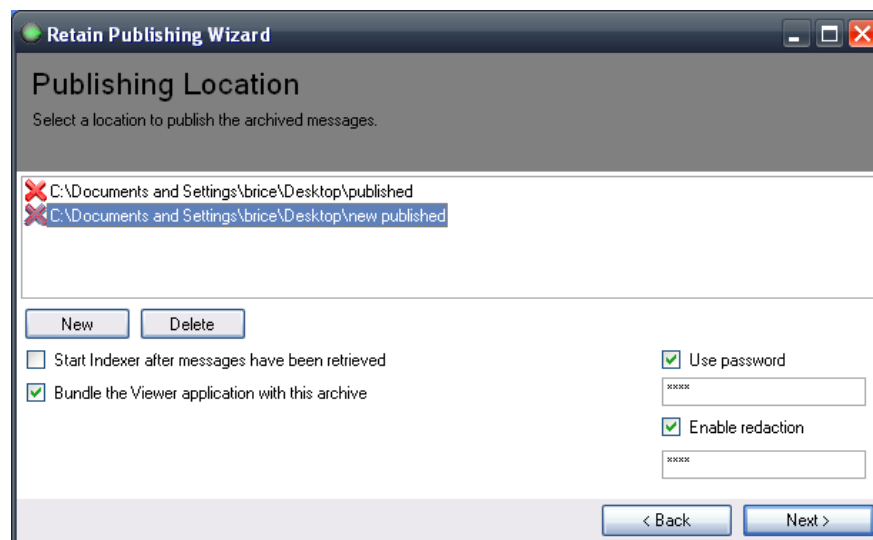
☐ Save Username and Password

English [dropdown] [Next >]

Select 'Next' to login to the Retain Server.



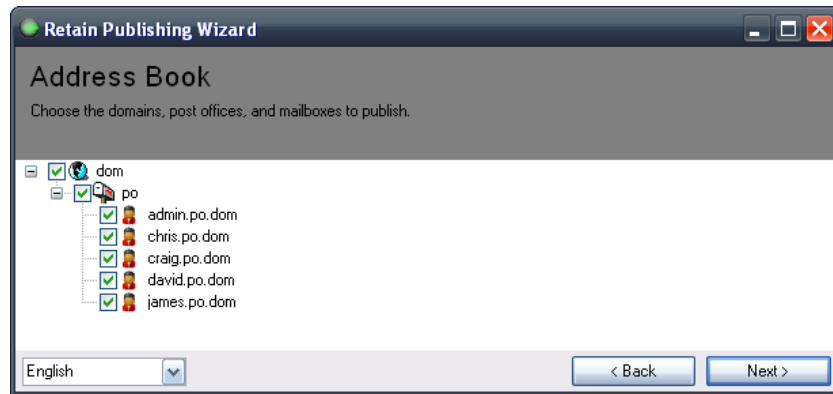
The Publisher then asks for the desired location for the exported archive messages. The messages extracted from the Retain Server will be saved in a database at this location. Select 'New' and then browse to, or create a new folder for the published archive destination.



The options to password protect and use Redaction, both require passwords. To use them, select the checkbox and specify a password. The passwords can be different and both options may be present on the same archive.

When the 'Bundle the Viewer application with this archive' option is selected, the Viewer installation file is copied into the archive as well, preparing it to be completely mobile; the entire destination folder can then be copied or sent to any system with all that is required to read and search the archive. If the archive is to be distributed on a burned DVD or CD, further redaction will not function from the disk. All redaction comments should either be made before the archive is burned to a disk, or the archive should be copied from the disk to a local location where changes can be saved. When burning the archive to a disk, it is always prudent to finalize the compilation.

Making the archive mobile can be very useful in situations where direct access to the Retain archive, such as during legal discovery, when email information is required to be surrendered for a user or group of users, an archive can be created and provided without disrupting current Retain operation. Click 'Next' to continue.

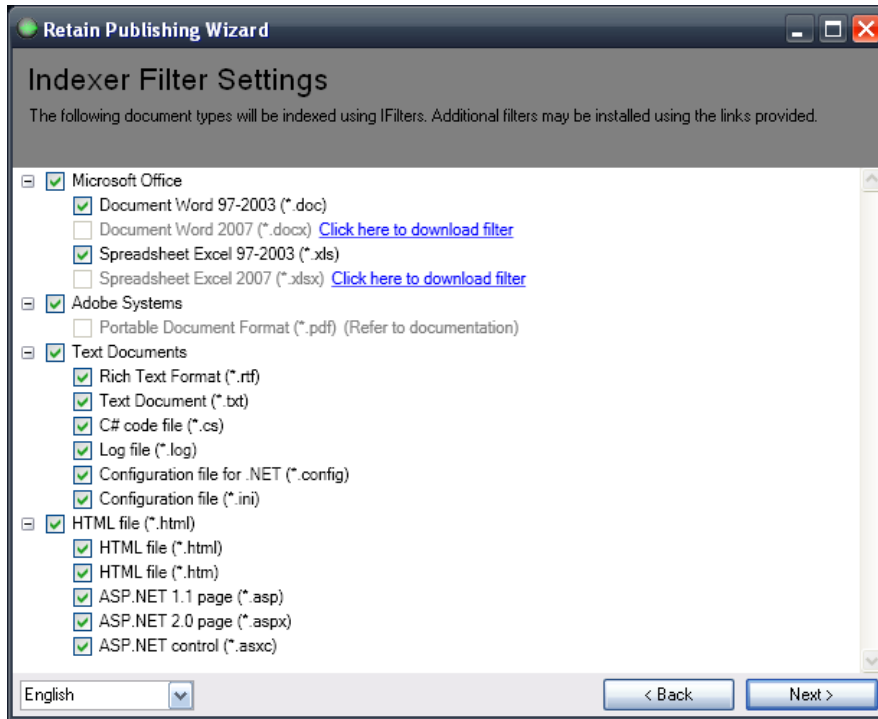


Select the scope of the export job. Single or multiple users, post offices, or domains may be added or excluded from any export job. Select 'Next' to continue.

Messages added to the archive can be restricted to a date range if desired. If a date range is desired, enable the date range and select the desired range. Default is one year. Click 'Next' to continue.

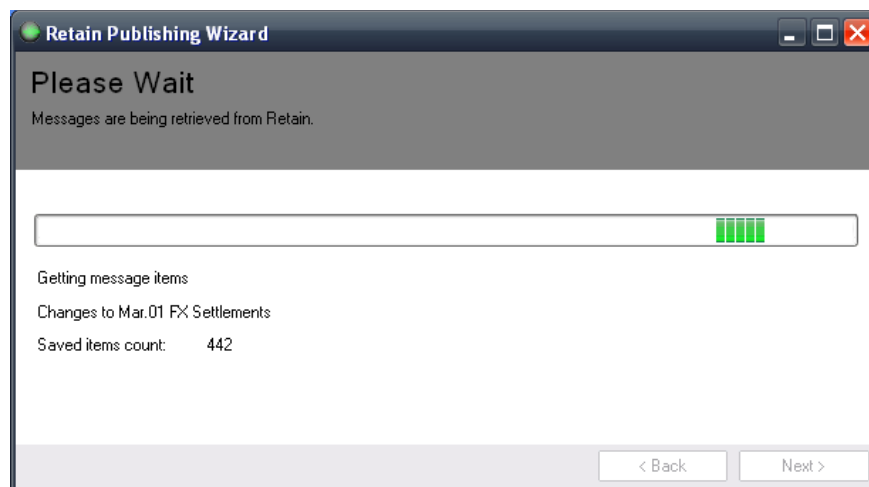


The Publisher can create an index the archive for faster searching and browsing by the Viewer. All default filters are shown. If additional filters are desired, they can be downloaded and installed by selecting the install link shown. Click 'Next' to continue.

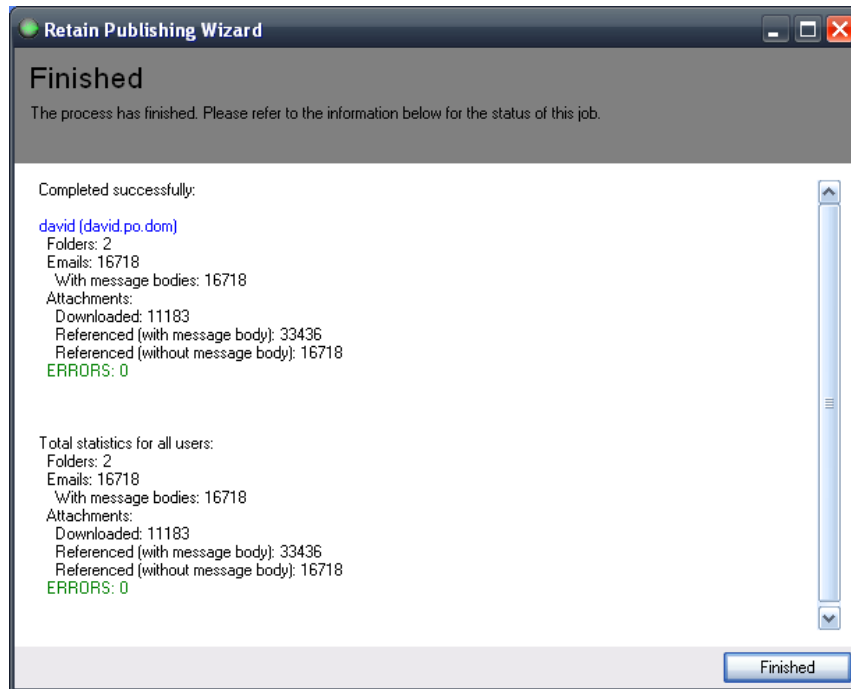


If previously published messages are present in the selected publish location then you will be presented the option to overwrite the present information, or to append the new messages to the existing message store.

The Publisher will connect to the Retain Server and export the qualifying messages from the selected user(s) mailboxes and builds the local archive.



When the Publisher is done, it will display a report on the job. Depending on whether the exported archive was selected to be indexed after the job is done, the indexer will run. A .net error may occur at the end of Indexing, caused by an error in Adobe iFilter, if this error occurs, please install Adobe PDF iFilter 5.0 found on Adobe's web site.



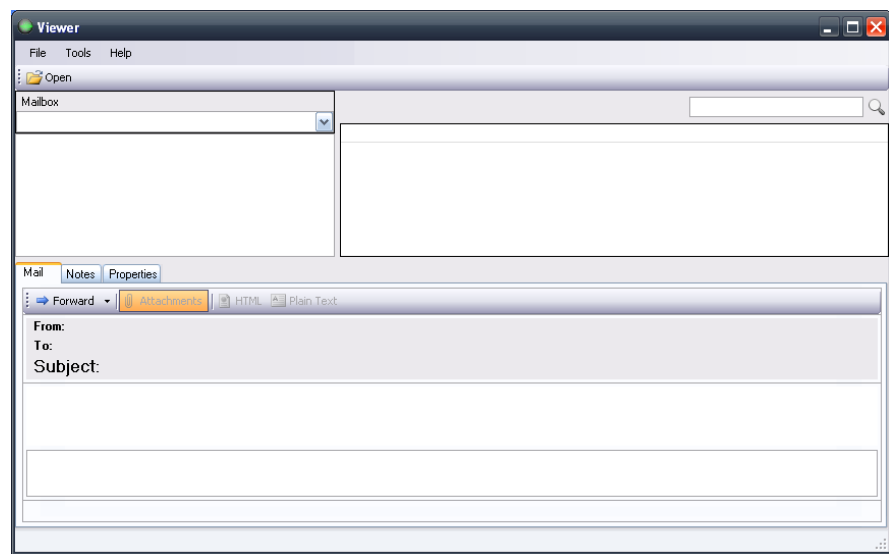
Select 'Finished' to exit the publishing wizard. With a successful publishing job, the archive is now ready to be connected to the Viewer.

## Retain Viewer

To connect to the published archive, locate the shortcut to the installed Retain Viewer and start the Viewer.



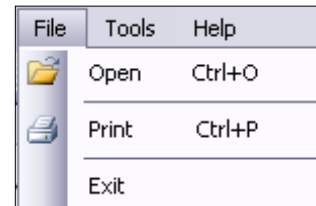
The viewer is setup similar to an email client, with the mailbox and account on the left, the selected account's contents fill the space on the top right, and any selected message's contents are displayed along the bottom. Tabs allow access to the message properties or text, and highlighted buttons below the tabs determine what is shown



and how, (Attachments, HTML, Plain Text). The Viewer also has the ability to forward the selected message out of the portable archive to any specified address.

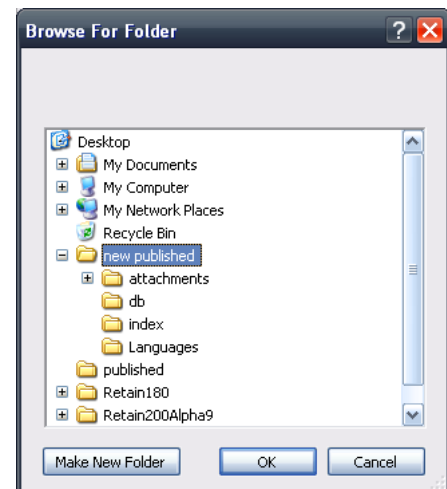


To access an archive, select the 'open' button from the top toolbar, or select the 'Open' option from the 'File' dropdown menu.

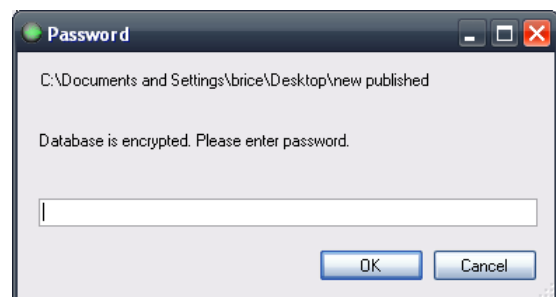


The Viewer only needs to know the base location of the archive, or the folder selected in the Publisher as the archive location. The 'Open' menu starts a browse window.

Browse to the location where the portable archive is located, select it, and click 'OK'.

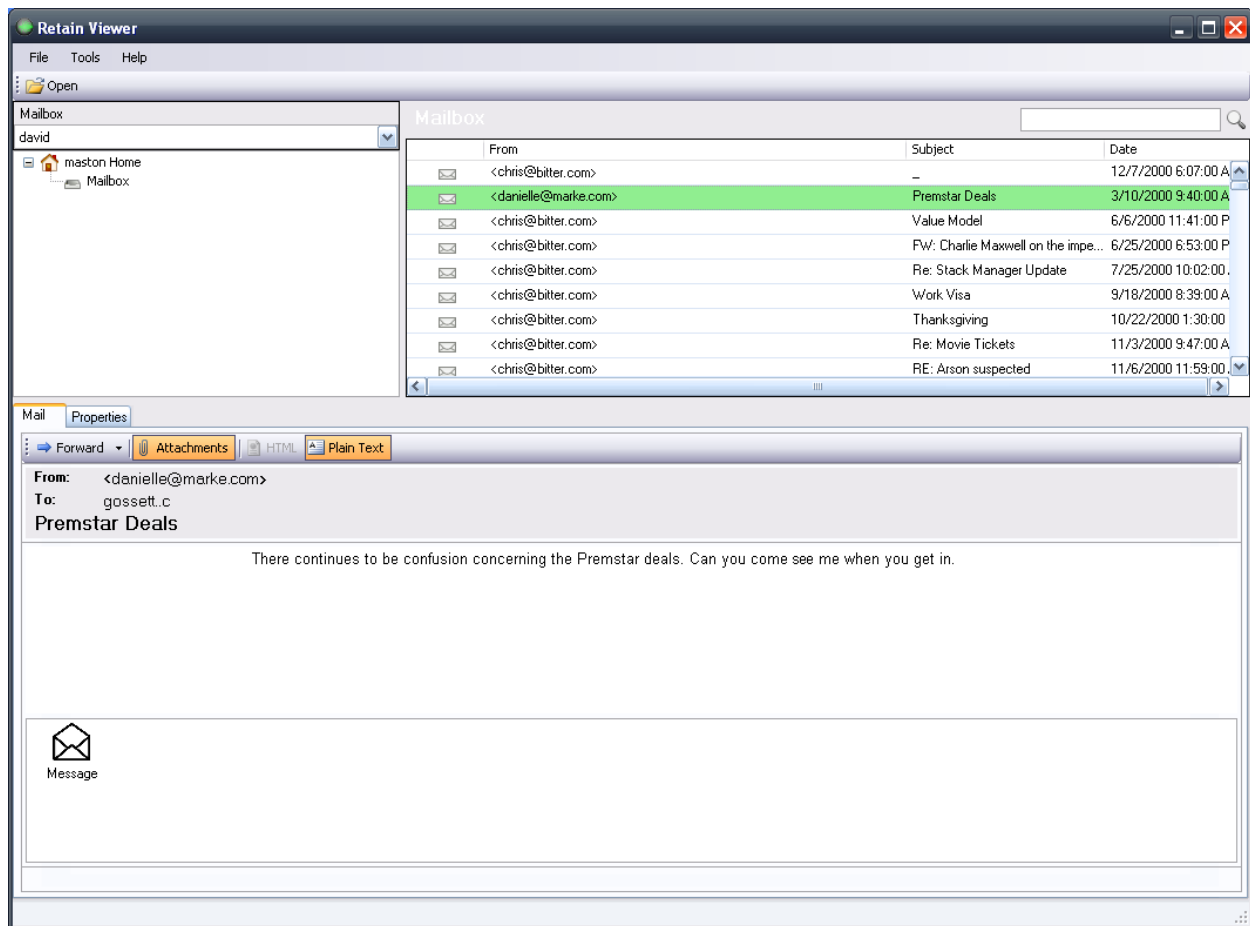


If the archive was password protected, the correct password must be entered here before the Viewer can gain access.

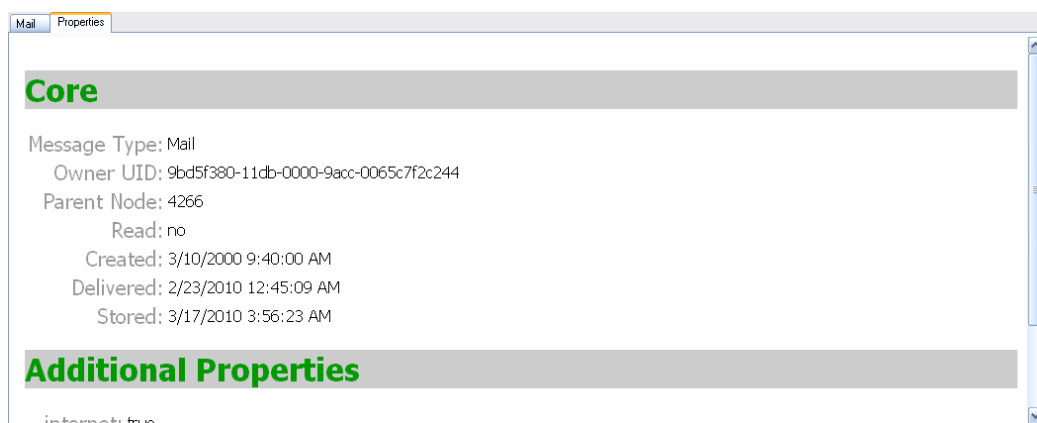


Once the Archive has opened, all mailboxes contained in the archive are displayed. Select a mailbox to access the mail in the archive.





The text of the selected message will be displayed in the bottom viewer pane. The viewer contains options to show or hide the attachments, forward the message, as well as whether to view the message in plain text, or in HTML when available.

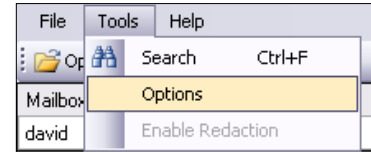


The properties tab displays the essential information on the mail item in question. The created, delivered, read status, and store date are displayed along with the identification number, message source, etc.

## Forward

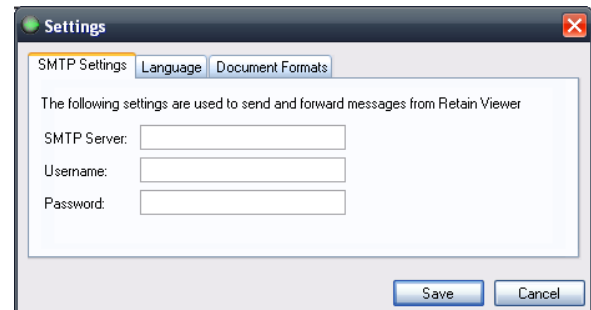
The Forward option allows the Retain Viewer to send the selected message from the archive to a destination account.

In order to utilize the 'Forward' option in the viewer pane, the Viewer must be configured with a mail server. To tell the Viewer which SMTP server and account to use to send messages, select 'Options' from the

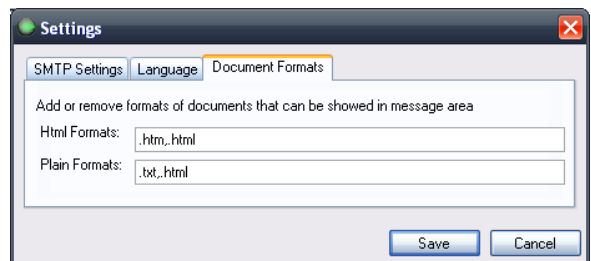
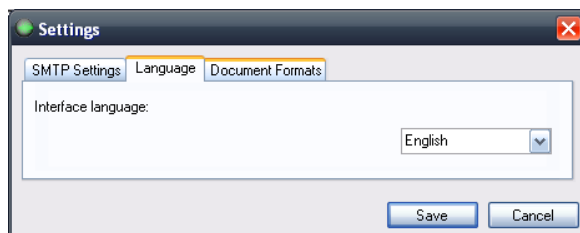


'Tools' drop-down menu.

The 'Settings' configuration menu will appear. Enter the DNS or address of the SMTP Server desired to use for the Viewer system, and an appropriate account, (Username and Password), to connect and send messages.



Language and displayed document format settings may be changed as well for the specific viewer.



## Redaction

Redaction allows the viewing auditor to compile notes on the archive. The notes are appended to the entire archive, and not any individual messages, which makes Redaction extremely useful to compile messages and identify messages of interest.

To enable redaction, the archive must first be exported with the redaction

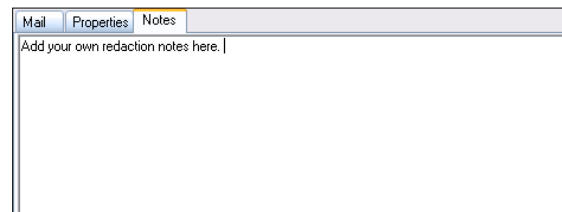
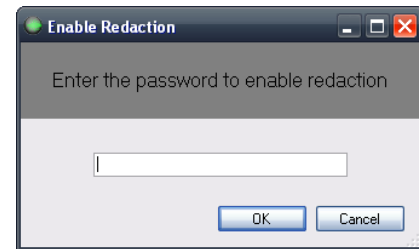
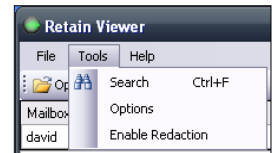
option enabled in the publisher, and a redaction password implemented.

On a redaction-enabled archive, to access the feature, it must be 'enabled' in the viewer. This option is found under the 'Tools' drop-down menu. Select 'Enable Redaction' from the drop-down

menu and enter the redaction password.

When Redaction is enabled, the message pane in the Viewer gains a new tab called 'Notes'. The 'Notes' tab works much like a notepad that is always connected to the archive. Items of interest or whole messages' texts can be copied and compiled in the redaction notes.

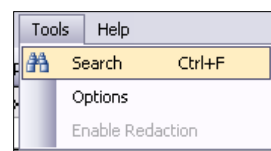
Redaction notes are connected to the entire archive and are not tied to any specific selected message; they stay the same across all messages to be accessible regardless which message is selected.



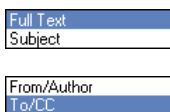


## Searching the Archive

The Retain Viewer provides a full search function. The Search function is accessed through either the shortcut 'Ctrl+F' or by selecting 'Search' from the 'Tools' drop-down menu.

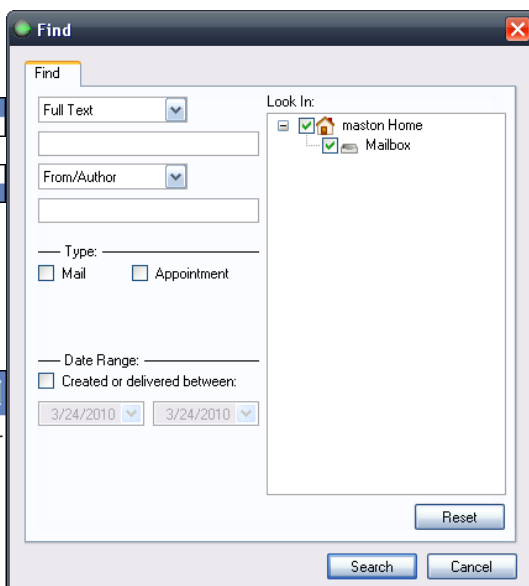
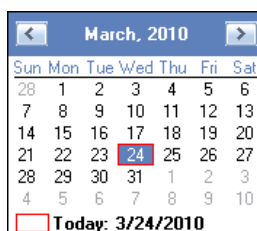


The different options for the search are shown with the criteria input below the options. Any text string or value can be searched for in the full text of the mail, or simply in the subject line.



The sending Author or the destination and carbon copy recipients of a message may also be searched for.

The search window allows you to specify or restrict the desired item type, and the date range. Selection of the date range is done through an interactive calendar.



Be sure to select the desired mailbox or mailboxes to apply the search through. (The depicted example archive only contains one mailbox.) Select 'Search' to begin.

When the search is finished, the results will be displayed. The results window has the messages found according to the search criteria above, and a display window for selected messages, identical to the search window in the main Viewer window.

